



JGT GROUP  
022-85368888  
[www.tjgtgroup.com](http://www.tjgtgroup.com)  
No.1 Shuangchen Road, Beichen District, Tianjin

Steel  
Plate

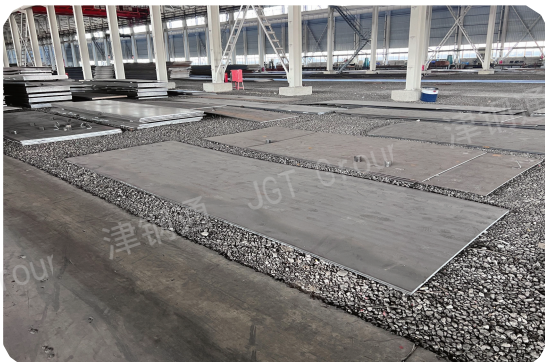
钢板





# Steel Plate

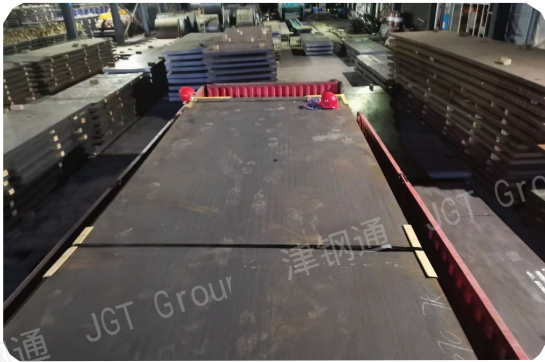
钢板



low carbon steel plate



carbon steel coil



High-carbon steel plate



wear-resisting plate

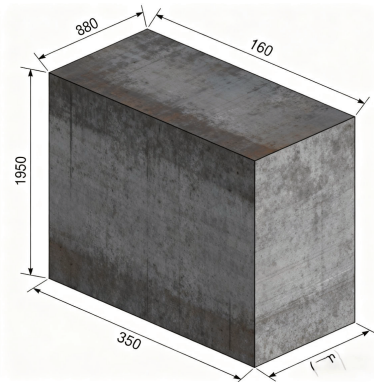
## Classification Table of Carbon Steel Types

Category	% C	Key Characteristics	Common Grade Examples	Typical Applications
Low Carbon Steel	0.05% - 0.25%	<ul style="list-style-type: none"><li>- Low strength and hardness</li><li>- Excellent ductility and toughness</li><li>- Easy to form and weld</li></ul>	AISI 1018, AISI 1008, AISI 1020, ASTM A36	<ul style="list-style-type: none"><li>- Automotive body panels</li><li>- Structural steel (I-beams, sheets)</li><li>- Pipes, pipe materials</li><li>- Wires, nails, rivets</li></ul>
Medium Carbon Steel	0.25% - 0.60%	<ul style="list-style-type: none"><li>- It has higher strength and hardness than low-carbon steel.</li><li>- It maintains good toughness.</li><li>- Its performance can be enhanced through heat treatment.</li></ul>	AISI 1040, AISI 1045, AISI 4140, ASTM A529	<ul style="list-style-type: none"><li>- Automotive components</li><li>- Rails, train wheels</li><li>- Machine parts, forging pieces</li><li>- High-strength structural components</li></ul>
High Carbon Steel	0.60% - 1.00%	<ul style="list-style-type: none"><li>- Extremely high strength and hardness</li><li>- Good wear resistance</li><li>- Low ductility and toughness</li><li>- Difficult to weld and cold process</li></ul>	AISI 1060, AISI 1075, AISI 1095, C60	<ul style="list-style-type: none"><li>- Spring</li><li>- Cutting tools (drills, taps)</li><li>- High-strength steel wire</li><li>- Blades, axes</li></ul>
Ultra-High Carbon Steel	1.00% - 2.00%	<ul style="list-style-type: none"><li>- Extremely high hardness and wear resistance</li><li>- Extremely brittle with poor toughness</li><li>- Difficult to process.</li></ul>	AISI 1095 , CPM 10V	<ul style="list-style-type: none"><li>- Professional cutting tools</li><li>- Pressing molds</li><li>- Wear-resistant parts</li><li>- Special blades</li></ul>

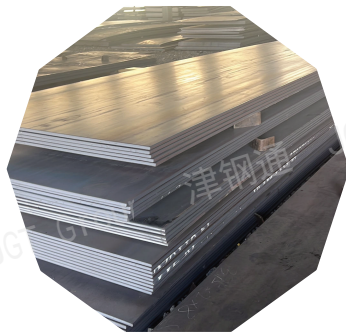




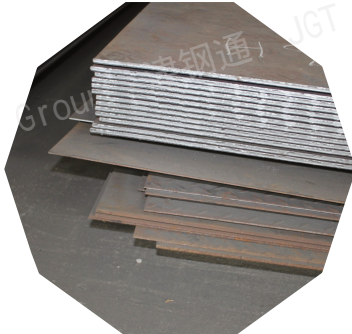
Low Carbon Steel Plate



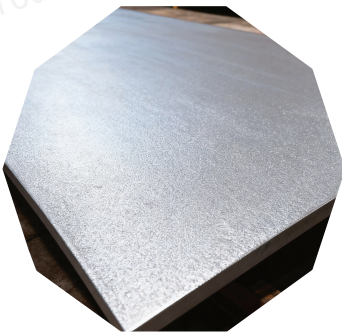
Core Specifications		
	inch	mm
Thickness	0.01-3.14	0.4-80
Width	3.93-137	100-3500
Length	39-708	1000-18000
Here are normal size and material, special requirements , please contact us.		



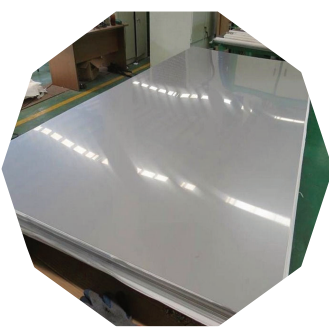
Cold Rolled



Hot Rolled



Shot Blasted



Galvanized

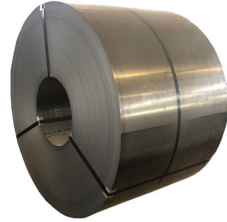
Material & Grade	
Steel Grade	Q235A/B, Q255A/B ASTM A36 /A283/A514/A572//A709/A285/A387 A515/A516/A533/A537/A588 S355JR/S235JR/S275JR SS400
Standard	GB/T 700, ASTM A36/A36M, EN 10025, JIS G3101
Process	Hot Rolled (HR) / Cold Rolled (CR)
Surface Treatment	1. HRAP (Hot Rolled Annealed and Pickled) 2. Black (As Rolled, with oxide scale) 3. Shot Blasted 4. Galvanized
Edge Condition	Mill Edge/ Sheared Edge/ UMC (Universal Mill Plate)
APPLICATION	Carbon steel plates are frequently used in construction to create ships, bridges, and other kinds of commercial or industrial structures. Because of their strength, carbon steel plates can be used to make a wide range of brackets, braces, and other components needed to build a building

Carbon Steel coil

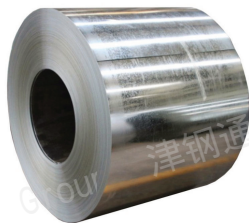
Core Specifications		
	inch	mm
Thickness	0.003-0.62	0.1-16
Width	3.93-137	100-3500
Length	20/24	508/610
Coil Weight	3-30 MT per coil (Standard), Customized Weight Accepted	



Hot Rolled



Cold Rolled



Galvanized

Material & Grade	
Steel Grade	Q235B, SPHC, SS400 (HRC 常用) Q195, SPCC, DC01, ASTM A1008 (CRC 常用) DX51D, SGCC, ASTM A653 (GI 常用)
Inner Diameter (ID)	508mm (20"), 610mm (24")
Standard	GB/T, JIS G, EN, ASTM
Edge Condition	Mill Edge (毛边) / Trimmed Edge (切边)
Surface Finish	HRC: Black/Scaled, Pickled & Oiled CRC: Matt, Bright GI: Regular Spangle, Minimal Spangle, Smooth
Coating Mass (仅GI)	Z60, Z80, Z100, Z120, Z180, Z275 (例如: Z275 = 275 g/m² total)
Yield Strength	≥185 MPa (SPHC), ≥280 MPa (Q235B)
Tensile Strength	270-410 MPa (SPHC), 370-500 MPa (Q235B)
Packaging	Waterproof Paper Wrapping + Steel Strapping + Inner Cores Protection. Coils are lifted by C-Hooks.
Applications	HRC: Structural Pipes, Construction, Automotive Frames CRC: Automotive Panels, Appliances, Furniture GI: Roofing, Wall Cladding, Ductwork



High-carbon steel plate



	Core Specifications	
	inch	mm
Thickness	0.04" - 2.0"	1.0 - 50 mm
Width	40" - 60"	1000 - 1500 mm
Length	80" - 120"	2000 - 3000 mm



Material & Grade	
Grade & Standard	GB: 65Mn, T8, T10, C70 ASTM: 1070, 1080, 1095, AISI 5160 EN: C70U, C80U, C100U
Carbon (C)	0.65% - 1.00%
Manganese (Mn)	0.60% - 1.00%
Hardness (As Rolled)	HBW 180 - 280
Delivery Condition	Annealed
Surface Treatment	Black (热轧氧化皮) / Shot Blasted (喷砂) / Cold Rolled (冷轧)
Processing Services	CNC/Laser/Flame Cutting
Packaging	Waterproof Paper Wrapping + Steel Strapping on Wooden Pallets.

wear-resisting plate

	Core Specifications	
	inch	mm
Thickness	1/4" - 4"	6 - 100 mm
Width	60" - 98"	1500 - 2500 mm
Length	20' - 40'	6000 - 12000 mm



Shot Blasted  
and Primed



Bare

Material & Grade	
Brand & Grade	Hardox® 400, 450, 500, 550, 600 JFE EH360, EH400, EH500 DILLIDUR 400V, 500V NM400, NM450, NM500, NR360
Hardness Level	HBW 400, HBW 450, HBW 500, HBW 550, HBW 600 (布氏硬度)
Surface Hardness	HBW 370-430 (NM400), HBW 430-480 (NM450), HBW 470-530 (NM500)
Tensile Strength	≥1250 MPa (NM400), ≥1400 MPa (NM500)
Impact Toughness	≥40 J (-20°C / -40°C)
Process	Quenched & Tempered
Surface Treatment	Shot Blasted and Primed (喷砂并涂底漆) Bare (黑皮态)
Processing Services	CNC Cutting (数控切割) Laser Cutting (激光切割) Bending & Welding (折弯与焊接咨询)
Packaging	Waterproof Paper Wrapping + Steel Strapping on Wooden Pallets. Edges protected.
Applications	Mining equipment (excavator bucket, dump truck body, crusher liner) Construction machinery (plow blade of bulldozer, concrete mixer blade) Material handling (hopper, chute, screening machine) Construction industry (inside cement tanker)